

A Colossal Update

Andy Clark

andy.clark@tnmoc.org

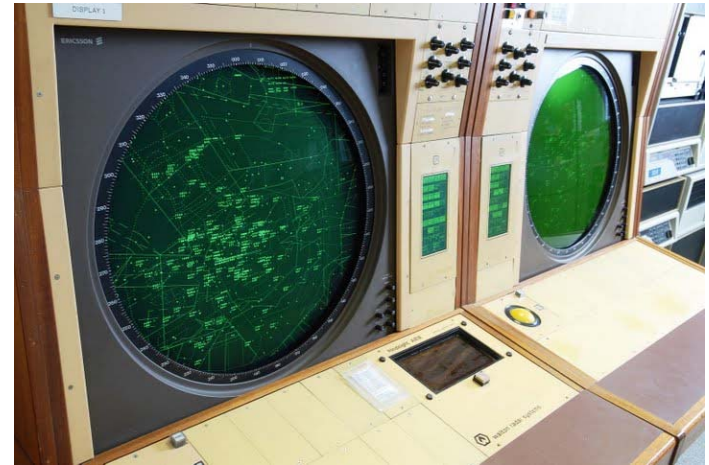
www.tnmoc.org

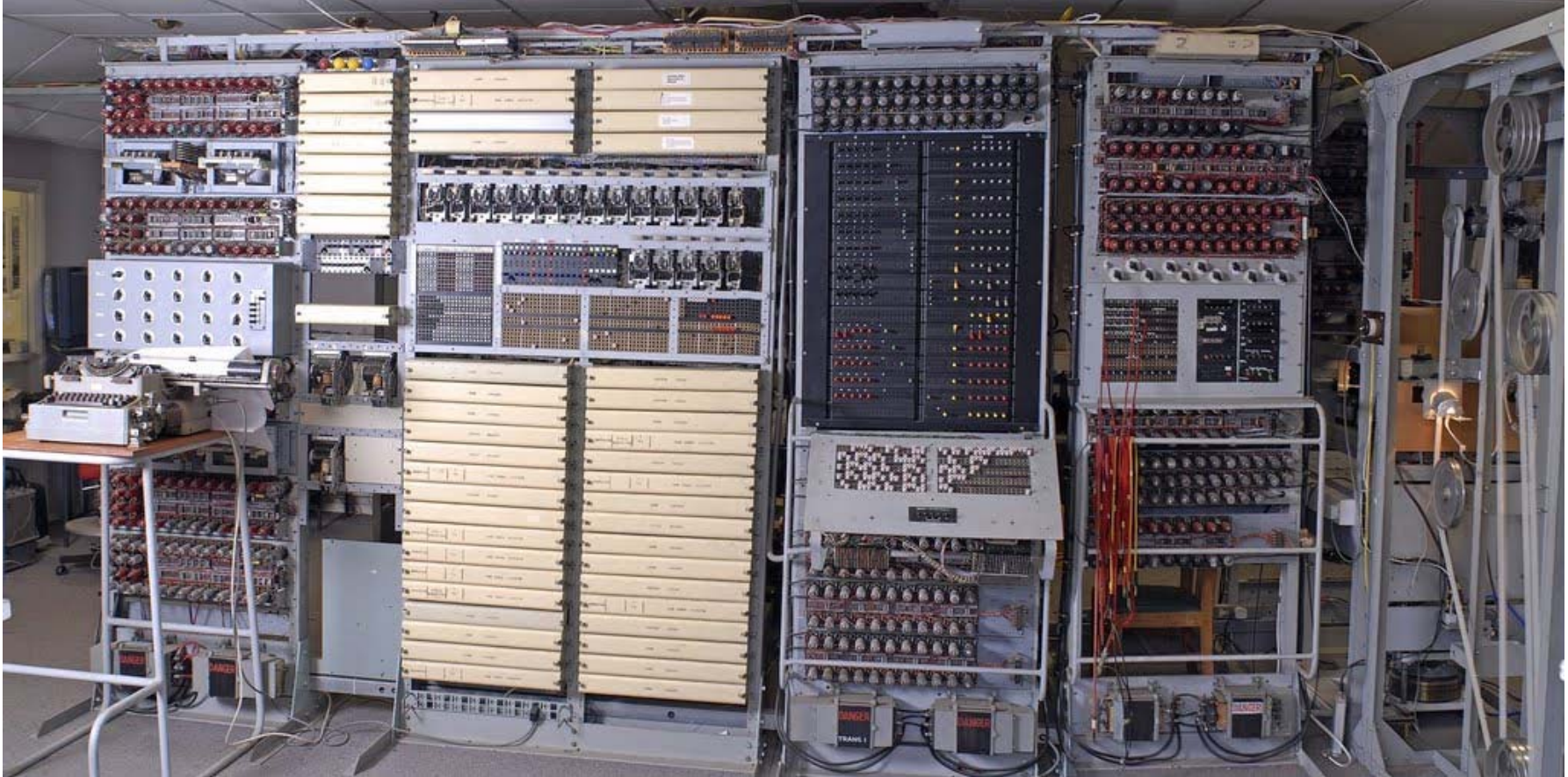
www.colossusonline.org



Thanks!

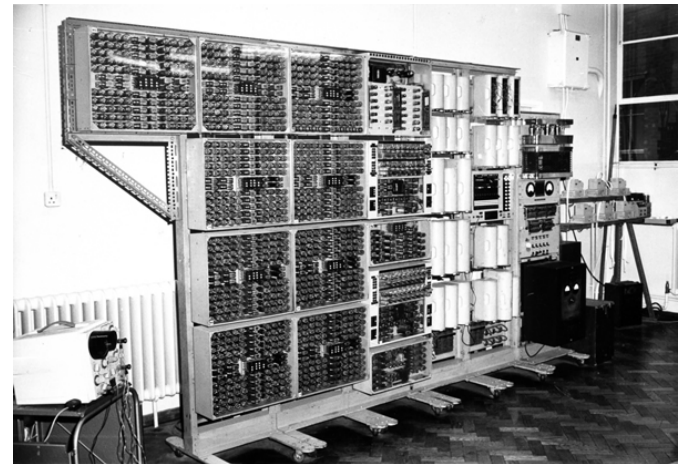
- Several IACR members were early contributors to saving the Colossus and building the National Museum of Computing at Bletchley Park
- We have achieved a great deal in 3 years
 - Colossus fully operational
 - New galleries






New galleries

- Packet switching
 - October 2009
- The Harwell Computer
- Electronic Office
- Debits and Credits
- Computing Pioneers



Please help us to keep working



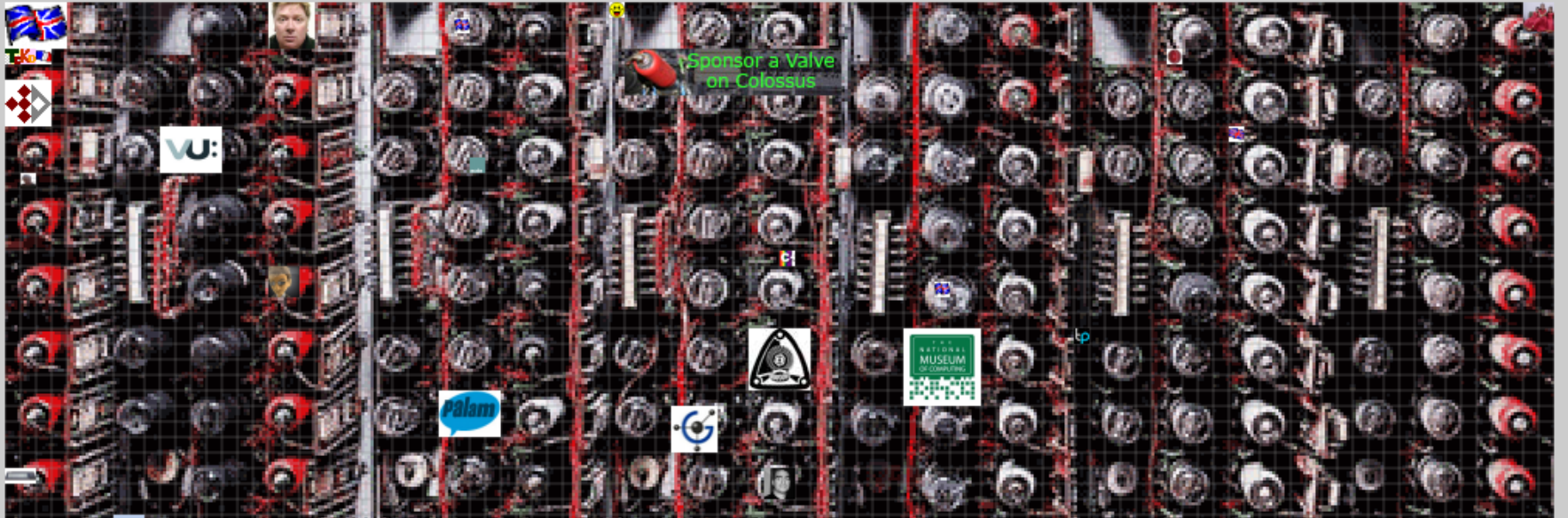
Sponsor a Valve on Colossus

Please sponsor a valve on Colossus to show your support for The National Museum of Computing at Bletchley Park. Colossus was the world's first electronic programmable computer and was used to crack the Lorenz codes of German High Command during World War II. There were 12 Colossi and each had 2,500 valves that performed the code-cracking calculations. A rebuilt and working Colossus is on permanent display at the museum. You can sponsor as many pixels as you like and add your logo or your name or nickname.

Pixels Sold: 19,800
Available: 980,200

[Home](#) [Get Pixels](#) [Pixel List](#) [Tell a Friend](#) [Blog](#) [RSS](#)

Magnifier On



www.colossusonline.org

Visit if you have the opportunity

